

SURVEY/POSTTEST

STRUCTURES OF LIFE

Name _____

Date _____

1. When there are signs that a plant has started to grow, we say the seed has _____.

(Mark the one best answer.)

- A generated
- B swelled
- C condensed
- D germinated

2. a. Write **X** next to each of the things a plant needs from the environment in order to grow and reproduce.

_____ sunlight

_____ soil

_____ air

_____ food

_____ nutrients

_____ water



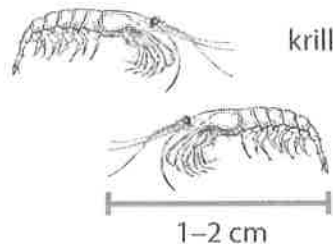
b. Write a word in the blank to complete the sentence.

The most important thing a seed needs to begin growing is _____.

3. Blue whales feed mostly on small shrimp-like animals called krill. Blue whales are _____.

(Mark the one best answer.)

- A herbivores
- B carnivores
- C omnivores
- D insectivores



SURVEY/POSTTEST

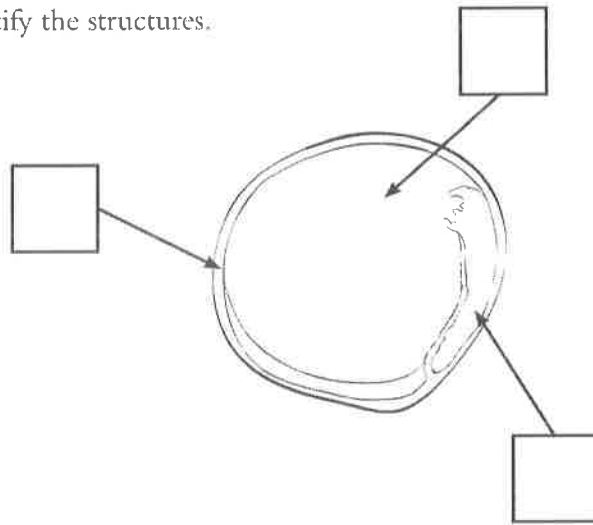
STRUCTURES OF LIFE

4. Write **X** next to each of the things that are **living**.

- _____ sand
- _____ snake
- _____ apple tree
- _____ seed
- _____ fire
- _____ water

5. Write a letter in each box to identify the structures.

- A** cotyledon
- B** seed coat
- C** embryo



6. Write a letter on each blank line to match the structures with their functions.

Structures

- _____ cotyledon
- _____ seed coat
- _____ embryo

Functions

- A** protects the seed until the plant begins to grow
- B** provides food for the plant as it begins to grow
- C** produces new seeds to continue the life cycle
- D** grows into the new plant

SURVEY/POSTTEST
STRUCTURES OF LIFE
.....

7. The number of bones in the human body is about _____.

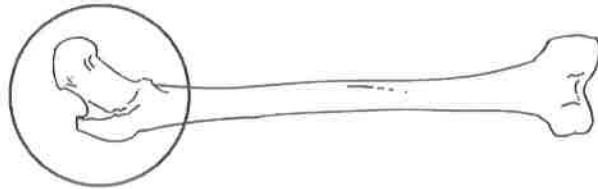
(Mark the one best answer.)

- A 38
- B 206
- C 456
- D 600

8. Look at the picture of a femur. The end of the bone that is circled is part of a _____.

(Mark the one best answer.)

- A gliding joint
- B hinge joint
- C ball-and-socket joint



9. Which structure causes you to smile?

(Mark the one best answer.)

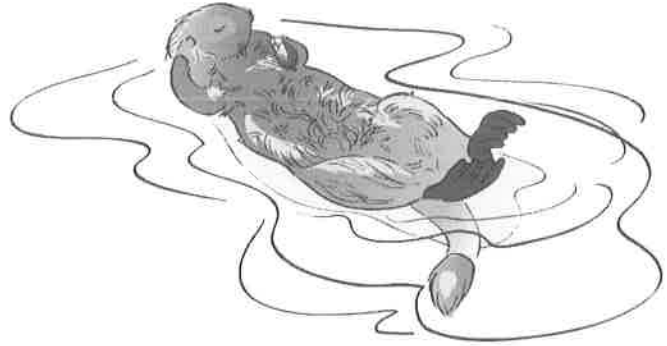
- A muscles
- B ligaments
- C joints
- D tendons

SURVEY/POSTTEST
STRUCTURES OF LIFE
.....

10. Which feature of a sea otter is most likely inherited from its parents?

(Mark the one best answer.)

- A using rocks to open clams
- B webbed feet
- C a scar on its nose
- D a torn tail



11. A feature that is especially important for an organism's chances of survival in an environment is _____ .

(Mark the one best answer.)

- A an advancement
- B a property
- C a preference
- D an adaptation

12. When you observe a snail eating, pulling itself into its shell, or using its tentacles to sense the environment, you are observing its _____ .

(Mark the one best answer.)

- A properties
- B adaptations
- C defenses
- D behaviors

SURVEY/POSTTEST

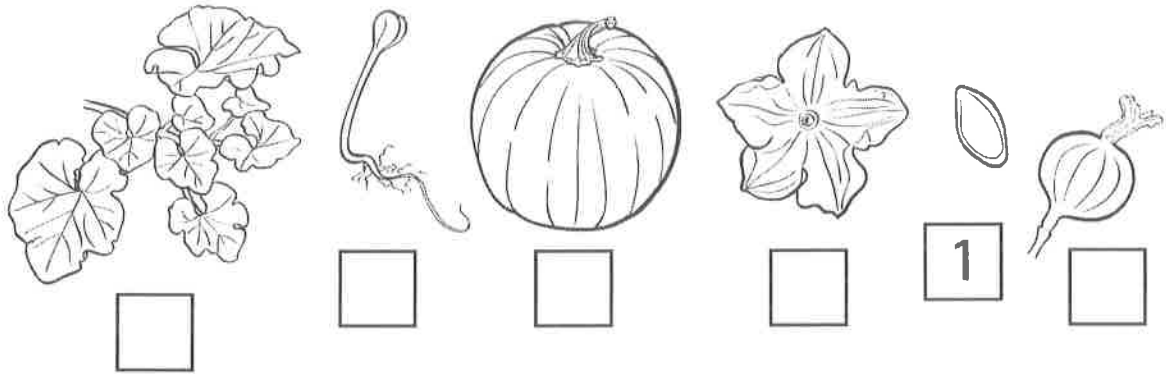
STRUCTURES OF LIFE

.....

OPEN-RESPONSE QUESTIONS

13. The pictures below show the life cycle of a pumpkin plant.

a. Number the pictures to show how a pumpkin grows, starting with the seed.



b. Describe what is happening at each stage of the life cycle as you numbered it above.

(1) _____

(2) _____

(3) _____

(4) _____

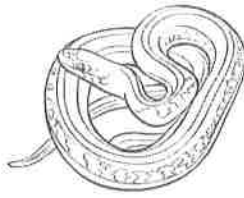
(5) _____

(6) _____

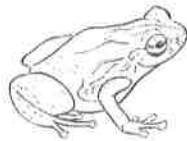
SURVEY/POSTTEST

STRUCTURES OF LIFE

OPEN-RESPONSE QUESTIONS



snake



frog



plant

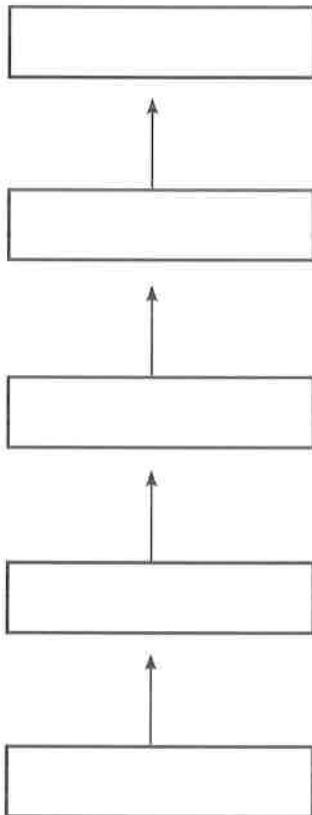


caterpillar



owl

Food Chain



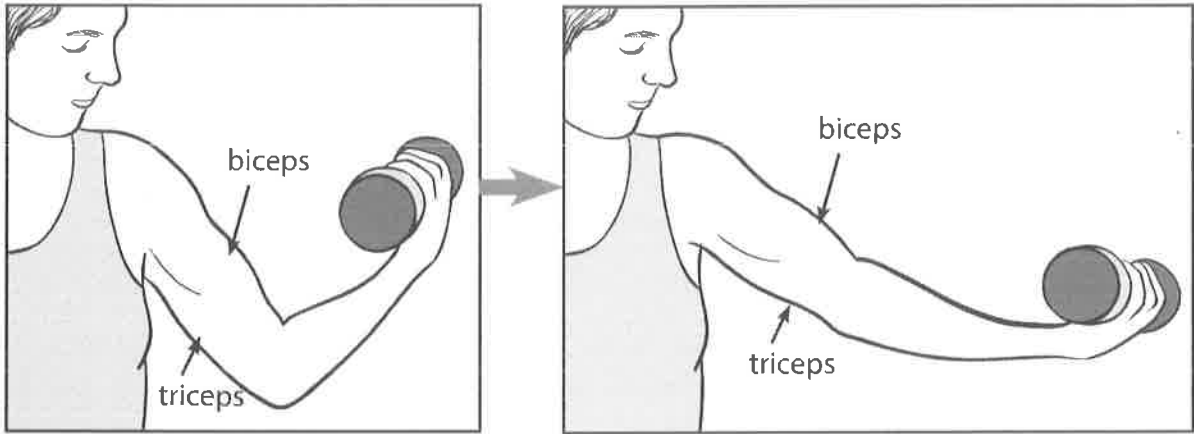
14. a. Write the name of an organism in each box on the left to show how the organisms above would be arranged in a food chain.
- b. If more caterpillars were introduced into the environment, what would happen to the populations of the other organisms in the food chain? (Assume that no population would die away completely.)

SURVEY/POSTTEST

STRUCTURES OF LIFE

.....

OPEN-RESPONSE QUESTION



15. A student was watching her friend lift weights to make her arms strong. She wrote this entry in her notebook:

We built a bone-and-muscle model of a leg in class. Using that model, I'm trying to explain how an arm works.

When the girl lifts the weight to her shoulder, I think the biceps gets longer. The biceps is the muscle attached to the top and bottom of the upper arm bone. When she moves the weight away from her shoulder, the triceps contracts.

What do you think? Is this student correct? Rewrite the second paragraph from the notebook entry, making any corrections you think are necessary.
