

# INVESTIGATION 1 I-CHECK

## STRUCTURES OF LIFE

---

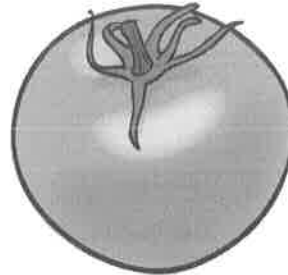
Name \_\_\_\_\_

Date \_\_\_\_\_

1. a. A tomato is a fruit. What about a tomato makes it a fruit?

*(Mark the one best answer.)*

- A A tomato is sweet.
- B A tomato contains seeds.
- C A tomato grows in the summer.
- D A tomato grows on a vine.



b. A carrot is not a fruit. Why not?

*(Mark the one best answer.)*

- A A carrot is long and skinny.
- B A carrot is not sweet.
- C A carrot grows underground.
- D A carrot does not contain seeds.



2. Write **X** next to each of the **living** things listed below.

- \_\_\_\_\_ deer
- \_\_\_\_\_ seed
- \_\_\_\_\_ rock
- \_\_\_\_\_ rose bush

# INVESTIGATION 1 I-CHECK

## STRUCTURES OF LIFE

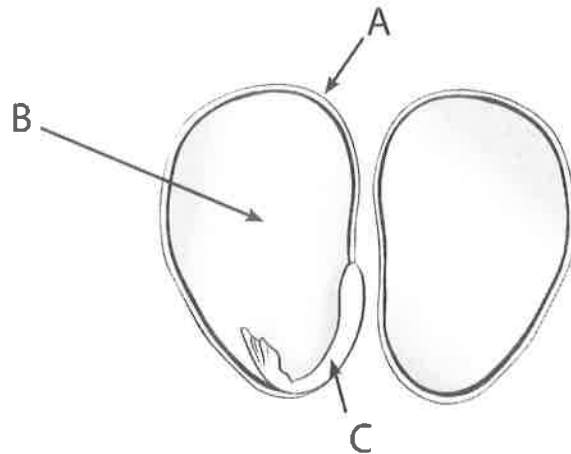
3. Color, shape, and texture are all examples of \_\_\_\_\_.

*(Mark the one best answer.)*

- A functions
- B properties
- C behaviors
- D structures

4. Write the letter that identifies each structure on the line next to its name.

- \_\_\_\_\_ cotyledon
- \_\_\_\_\_ seed coat
- \_\_\_\_\_ embryo



5. Write **X** next to the effects that you see when a seed is soaked in water overnight.

- \_\_\_\_\_ The seed becomes bigger.
- \_\_\_\_\_ The seed coat gets loose or comes off.
- \_\_\_\_\_ The seed weighs less.
- \_\_\_\_\_ The seed becomes harder.

# INVESTIGATION 1 I-CHECK

## STRUCTURES OF LIFE

6. Write a letter in each blank to match the structures with their functions.

### Structures

\_\_\_\_\_ cotyledon

\_\_\_\_\_ embryo

\_\_\_\_\_ seed coat

### Functions

**A** provides food for the plant as it begins to grow

**B** supports the plant as it begins to grow

**C** grows into the new plant

**D** protects the seed until the plant begins to grow

7. Write **X** next to each word that describes something that can help seeds disperse (move to different places).

\_\_\_\_\_ the wind

\_\_\_\_\_ a squirrel

\_\_\_\_\_ a mosquito

\_\_\_\_\_ water

\_\_\_\_\_ a bird

8. The table shows how long it took seeds to sprout at three different temperatures. If the pattern continues, how many days will it take for the same kind of seed to sprout at 24°C?

*(Mark the one best answer.)*

- A** 15 days
- B** 8 days
- C** 10 days
- D** 6 days

Temperature (°C)	Days to sprout
15	14
18	12
21	10
24	

# INVESTIGATION 1 I-CHECK

## STRUCTURES OF LIFE

---

9. Which feature of a dog is most likely inherited from its parents?

*(Mark the one best answer.)*

- A its black fur
- B a scar on its paw
- C a torn ear
- D a missing tooth

10. Here is a picture of a dandelion.



When the seeds from the dandelion are planted, which picture below shows what that plant will most likely look like?

*(Mark the one best answer.)*

A

B

C

D



Name \_\_\_\_\_

# INVESTIGATION 1 I-CHECK

## STRUCTURES OF LIFE

.....

### OPEN-RESPONSE QUESTIONS

11. a. Describe two different fruits and their seeds. Include the number of seeds the fruit is likely to have. Also include at least two properties that describe the seeds.

Fruit 1:

---

---

---

---

---

Fruit 2:

---

---

---

---

---

- b. How are the seeds from these two fruits alike and how are they different?

The seeds from these two fruits are alike because

---

---

---

---

---

The seeds from these two fruits are different because

---

---

---

---

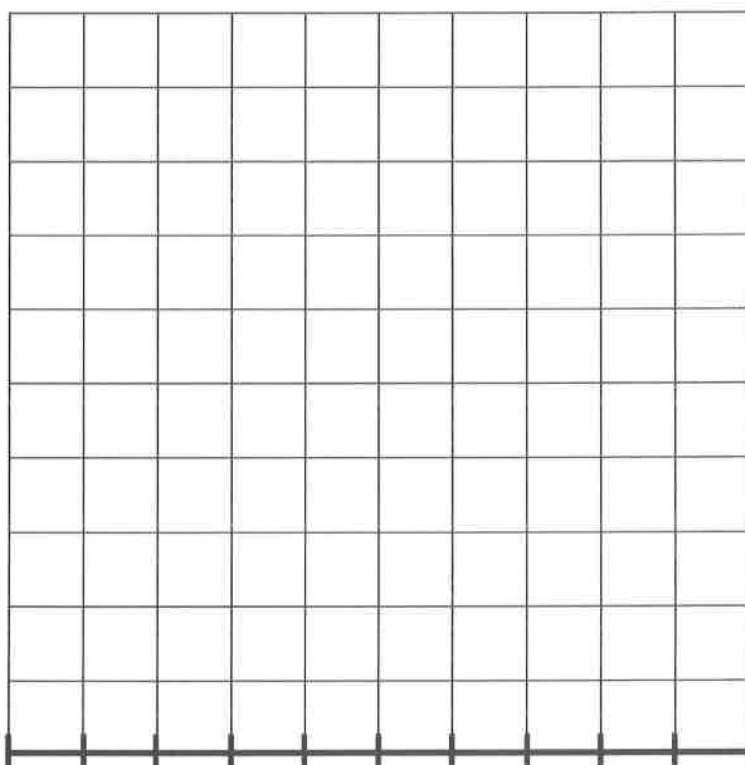
---

# INVESTIGATION 1 I-CHECK

## STRUCTURES OF LIFE

### OPEN-RESPONSE QUESTIONS

12. A boy and a girl were asked to shell peas for dinner. They decided to make this into a science project. They wanted to find the most common number of peas per pod.
- a. Their data are shown on the table. Use this data to make a line plot.



Pea pod	Number of peas per pod
1	8
2	7
3	6
4	7
5	7
6	10
7	6
8	5
9	8
10	6
11	7
12	7
13	8
14	6
15	9
16	5
17	8
18	7
19	6
20	7

- b. What was the most common number of peas they found in the pods?